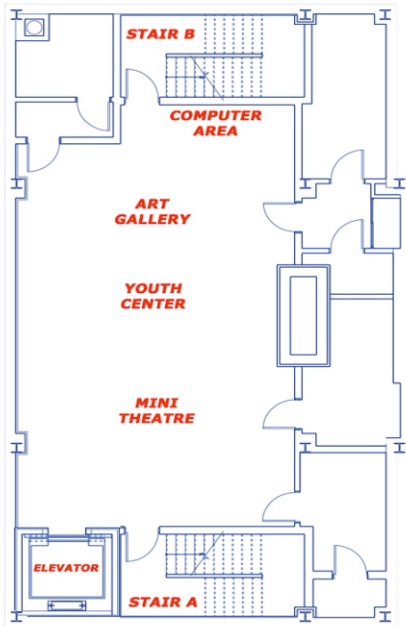


## Floor Details

### Cellar



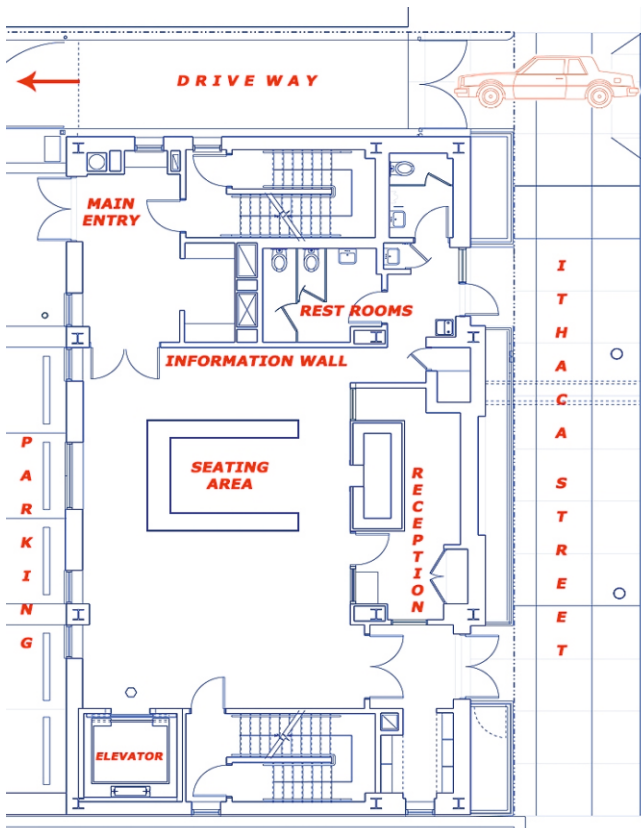
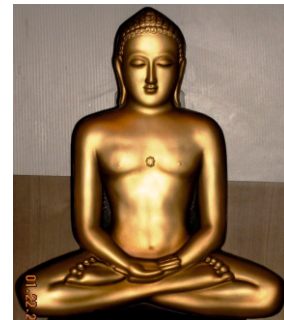
- Height. 8' - 8"
- Area 2350 sq. ft.
- Elevator
- 2 Set of Stairs
- Various Utilities
- Multipurpose hall  
1000 sq.ft.- 65 people
- Youth Center
- Computer Area
- Art Gallery
- Mini Theatre
- Children's Room



**BHOMIAJI**

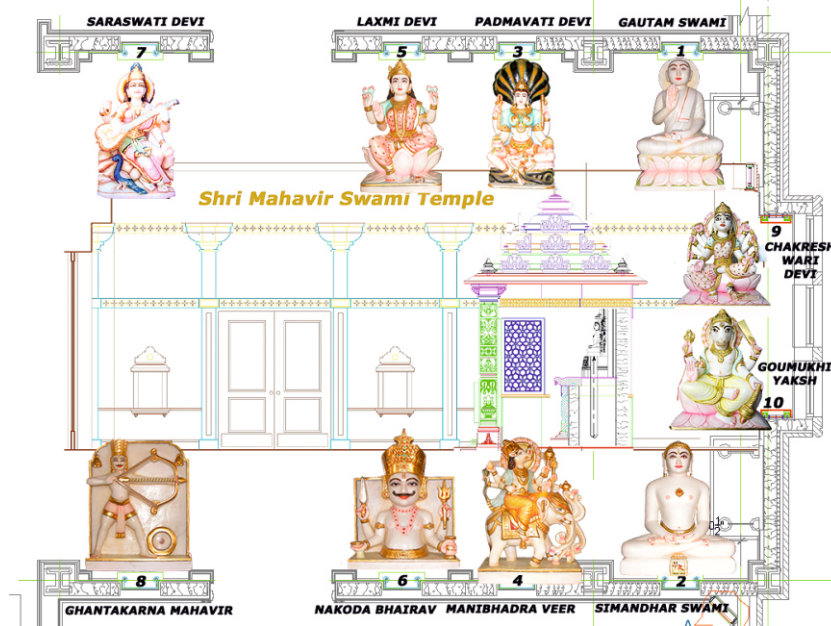
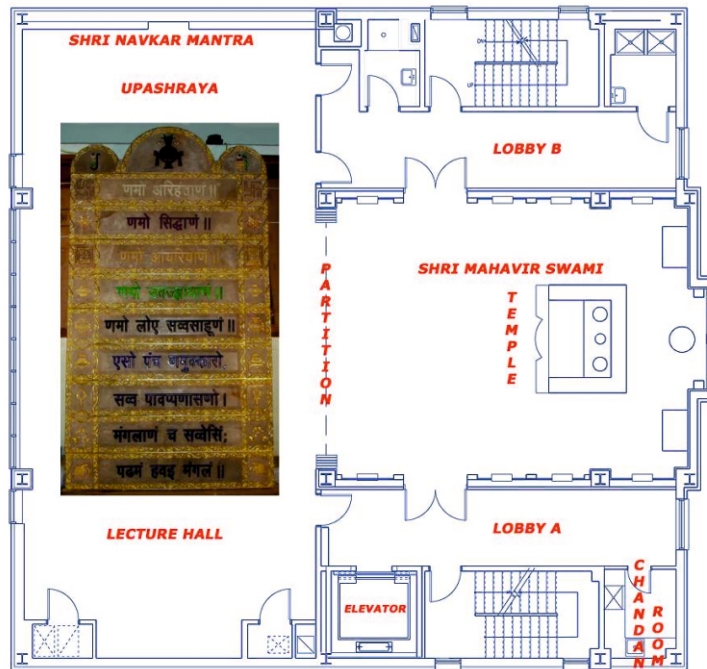


**First Floor**



- Height. 8' - 2" & 9'
- Area 2350 sq. ft.
- Drive-way to 11 -car Parking lot
- Handicap Parking
- Front & Back entrance
- Coat & Shoe Rooms
- Rest Rooms
- Reception Hall 860 sq.ft
- Welcome Center
- Small office, including security and gift shop
- Shri Bhomiaji
- Jain Chinh / 3-D Image
- Senior Citizen Center
- T.V. Screen & Public Address System
- Information wall
- Shilalekh
- Bulletin Boards

### Second Floor



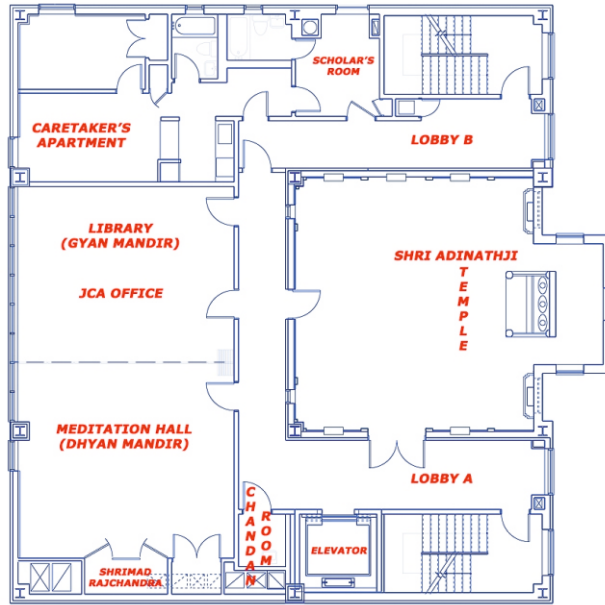
#### Lecture Hall/ Sthanak

Ht. 12’-10”  
 Area 1850 sq. ft.  
 (169 people)  
 A folding partition  
 to temple  
 Wall Niche-Navkar Mantra  
 Provision for Stage with  
 audio visual facilities

#### Mahavir Swami Temple

Ht. 14’-8” / Area 870 sq. ft. (52 people)  
 Entrance through two lobbies – 280 sq. ft.  
 Main Garbhagruha with Ghummat, Kalash & Dhwaja  
 Mahavir Swami main idol with  
 Neminath & Sambhavnath on side  
 A small Chovisi on the wall inside the Gabhara  
 Parshwanath & Shantinath (Gokhalas on sides)  
 Bhamati for Parikrama & Adinath Chomukhi  
 10 Dev Devi Gokhalas, various PATS & Art Work  
 Chandan Room / Shower Rooms

**Third Floor**



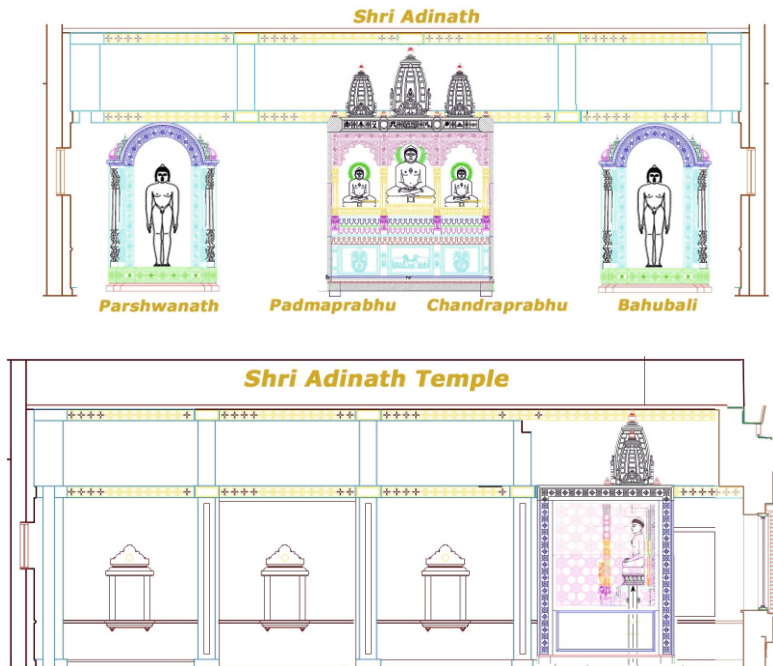
**Meditation Hall**

Height. 9' – 6" area 500 sq. ft. dedicated to Shrimad Rajchandra Facilities for Samayik, Pratikraman, Bhakti & Sadhana A folding partition to Library

**Library** 430 sq. ft. (Total area 930 sq.ft) Lobby & Hallway walls contain artwork Scholar's Room - for Sadhus, Sadhis & Scholars. Residential Unit: for Caretaker APT - J.C.A. Office

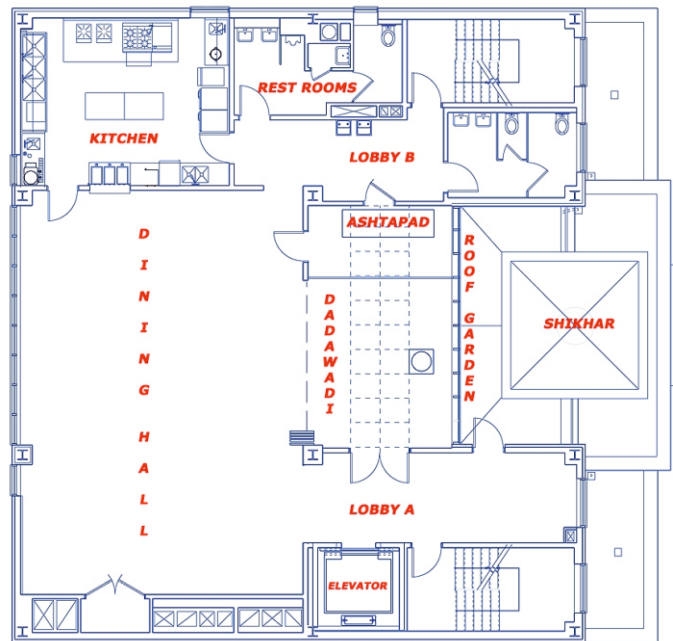
**Adinath Temple**

Height 11'-2" / Area 780 sq. ft. (41 people) Main Garbhagruha with 3 Shikharas, Kalash & Dhwaja dedicated to Adinath, Padma Prabhu and Chandra Prabhu Gokhalas have Mahavir Swami & Shantinath Idol, Jin Vani, Panch Meru, Om Rhim Parshwanath & Bahubali on sides (Standing) 10 Laxana and 12 Bhavna





**Fourth Floor**



**Dining Hall**

- Height 9' - 5"
- Area 1200 sq. ft.
- Accommodation
- 100 people
- Bhojan Shala and Ayambil Shala
- Kitchen & Storage
- Drinking Water – Fountains
- Public Facilities
- A folding partition to Dadawadi

**Dadawadi**

- Height on sides: 11' - 1"
- Skylight Ht. 15' - 7"
- W. 6' L. 25'
- Area 375 Sq. Feet
- Shri Guru-Mandir
- Roof Garden & Shikhar

**Ashtapad Tirth**

- Ht. - 13.1' W. - 14.7"
- D. - 5'.1" Area- 105 sq.ft.
- Shri Chovisi
- Glass-Panel wall in front.



**Model #3**

**W 3' X Ht 3'**



## A WORD ABOUT ART WORK

- Jainism is a way of life and an art of living.
- Its rich heritage of art work has been an inspiration to us and to all.
- Jain literature is vast and deals with all subjects.
- Jain principles exhibited here are in close adherence with Jain scriptures.
- Jain practices are presented with simple explanations along with pictures.
- Practicing religion with understanding will guide one on the right path to spiritual peace.
- All major traditions are represented here. A unity in diversity.
- We have tried to encompass many aspects of our heritage in a limited space.
- This artwork is for everyone - young and old, Jain and non-Jain, present generation and generations to come.

## ART WORK - GENERAL

- The art work is divided in various categories- see page 32 for Artwork by Code details.
- Detailed charts for exhibits in the temple, halls, lobbies & stairs are given on page 5, 6, & 7.
- Visit all floors of the temple to see original Paintings, Marble Pats, and Silver Panels which were made by many artists and artisans in India.
- Be sure to visit the library on the third floor to learn more about Jainism.
- Pictures have been collected from many different sources but we have not been able to get permission from each and everyone. Nonetheless we want to thank all of them.
- Pictorial Guide (consists of 500+ posters, paintings, PATs & panels) is available on DVD.
- Two DVDs containing 3000+ general pictures collected code-wise for artwork are available.
- If there are any errors, please bring them to our attention. We wish to make due corrections.
- Suggestions are welcome.
- Our sincere thanks to all, who have helped in this project.

## JAI JINENDRA

PICTORIAL GUIDE TO JAINISM

A PICTORIAL GUIDE TO JAINISM - PRINCIPLES & PRACTICES - ART WORK BY CODE - LISTING								11/07/2010
CODE	SUBJECT	#	CODE	SUBJECT	#	CODE	SUBJECT	#
<b>A00</b>	<b>ESSENCE OF JAINISM</b>	<b>3</b>		<b>Jain Practices - III</b>	<b>8</b>	<b>N00</b>	<b>SILVER DOOR PANELS</b>	<b>36</b>
A01	Jain Theory	1	G08	Yoga & Meditation	2	<b>O00</b>	<b>NAV KAR MANTRA</b>	<b>1</b>
A02	Jina	1	G09	Vegetarianism	4	<b>P00</b>	<b>STAMPS / COINS</b>	<b>6</b>
A03	Shri Chovisi	1	G10	Forgiveness	2	P01	Stamps & 1st Day Covers	4
						P02	Coins	2
<b>B00</b>	<b>SOUL &amp; KARMA THEORY</b>	<b>9</b>	<b>H00</b>	<b>CHATURVIDH SANGH</b>	<b>8</b>	<b>Q00</b>	<b>COMICS</b>	<b>4</b>
B01	Soul and its Quality	4	H01	Acharyas	1	<b>R00</b>	<b>QUOTATIONS</b>	<b>18</b>
B02	Karma Theory / 8 Types	1	H02	Shravak / Shrivika	1	R01	Quotes	11
B03	Six Universal Substances	1	H03	Scholars-India /Overseas	1			
B04	Matter & Energy	1	H04	Reverence to Saadhuji	1	<b>S00</b>	<b>ART GALLERY POSTERS</b>	
B05	9 Tattva - 9 Reals	1	H05	Gunadharavada	1	S01	JAINA Art Gallery Posters	187
B06	Char Gati	1	H06	Women in Jainism	1	S02	Pictorial Guide Posters	226
			H07	Children in Jainism	1	S03	Ashtapad / Bhaktamar P.	128
			H08	Famous Legends	1	S04	Temple Artwork	190
<b>C00</b>	<b>JAIN PRINCIPLES</b>	<b>8</b>				S05	Artwork Strips	38
C01	Ahimsa (Non-Violence)	3				S06	Teachings of Mahavira	7
C02	Anekant (Non-Absolutism)	2	<b>I00</b>	<b>JAIN HISTORY</b>	<b>7</b>	S07	Theory Posters	19
C03	Blind Man & Elephant	1	I01	Major Traditions	1			
C04	Aparigraha	2	I02	Unity in Diversity	1	<b>T00</b>	<b>SHRIMAD RAJCHANDRA</b>	<b>10</b>
			I03	Statistics	2			
			I04	Jain History	1			
<b>D00</b>	<b>JAINISM &amp; SCIENCE</b>	<b>13</b>	I05	Jain Festivals	2	<b>U00</b>	<b>DADA GURUDEO</b>	<b>10</b>
D01	Ecology	1		<b>Jain Communities</b>	<b>6</b>	U01	Dada Gurudeo - General	10
D02	Astronomy in General	1	I06	JAINA	1	U02	Dada Chitra Samput	
D03	Astronomy & Stones		I07	JCA / Visitor's Book	1			
D04	Astronomy & Nav Graha	1	I08	Jains Today & Tomorrow	1	<b>V00</b>	<b>EDUCATION</b>	<b>42</b>
D05	Time Cycle & Units	1	I09	Youth Center - Y.J.A	1	V01	Library, Website, & Links	1
D06	Biology	1	I10	Senior Center	1	V02	Pathshala	1
D07	Mathematics	1	I11	Young Professional-Y.J.P	1	V03	Jain Alphabet	2
D08	Psychology	1				V04	Symbols & Others	14
D09	Anatomy & Physiology	1	<b>J00</b>	<b>PILGRIMAGE</b>	<b>6</b>	V05	Jain Languages	2
D10	Cosmology	1	J01	Tirth in India	2	V06	University & Degree	2
D11	Applied Physics	1	J02	Tirth in America	1	V07	Jainism - Theory Posters	20
D12	Atomic Science	1	J03	Tirth Overseas	1			
D13	Astro & Bio Physics	1	J04	Pilgrimage General	1	<b>W00</b>	<b>ASHTAPAD T. MODEL</b>	<b>1</b>
D14	Science & Religion	1	J05	Chhari Palit Sangh	1			
						<b>X00</b>	<b>TEMPLE ARTWK 3rd Fl.</b>	<b>42</b>
<b>E00</b>	<b>SCRIPTURES/BHAKTAMAR</b>	<b>58</b>	<b>K00</b>	<b>JAINISM IN ACTION</b>	<b>5</b>	X01	12 Bhavana	12
E01	Scriptures - General	4	K01	Social Activism	1	X02	Das Lakshana	10
E02	Agam and Other Scriptures	2	K02	Humanitarian Services	1	X03	Om Hreem Shrim Arhum	4
E03	Gyaan, Pooja & Others	2	K03	Vaiya Vachha	1	X04	PAT - Marble	4
E04	Bhaktamar E1 to E9	50	K04	Sahadharmik Bhakti	1	X05	Temple Activities	4
			K05	CARxE-S	1	X06	General	3
<b>F00</b>	<b>JAINISM - A WAY OF LIFE</b>	<b>17</b>				X07	Jain Geography - Universe	5
F01	12 Vrata / 5 Great Vows	2	<b>L00</b>	<b>TEMPLE ARTWK 2nd Fl.</b>	<b>93</b>			
F02	18 Papasthanak	2	L01	Abstract Designs	9	<b>Y00</b>	<b>ARTWK/POSTER LISTING</b>	
F03	14 Gunasthanak / 11 Steps	2	L02	Mahavir Life - Events	7	Y01	Artwork by Code Index	
F04	Vis Sthanak Pad & Nav Pad	2	L03	Pancha Kalyanak	5	Y02	Temple Artwork Listing	
F05	Holy Death / Siddha Shila	2	L04	Adi / Shanti / Parshvanath	3	Y03	Pictorial Guide Listing	
F06	3 Jewel - Samyag Jnan	1	L05	Nem Rajul & Sh. Saadhuji	2		A) Master Listing	
F07	Samyag Darshan	2	L06	Ceiling Art -16 Vidhya Devi	2		B) Alphabetical Listing	
F08	Samyag Charitra	1	L07	Statue and Gokhalas	30		C) Listing by Code	
F09	Dana - Shiyal - Tapa - Bhava	1	L08	General + Art Work Strips	20		D) Listing by Location	
			L09	Glass Etching - Silver WK	15	Y04	Art Work Booklet	
			L10	PAT - Marble etc.	10			
<b>G00</b>	<b>JAIN PRACTICES - I</b>	<b>8</b>	<b>M00</b>	<b>BLDG INFORMATION</b>	<b>5</b>	<b>Z00</b>	<b>GENERAL</b>	<b>6</b>
G01	Bhakti / Worship / Pooja	4	M01	Information Wall	1	Z01	Conflict Resolution	1
G02	General - Yantra	1	M02	Shilalekh & Jain Chinha	1	Z02	Common Misconceptions	1
G03	Special	2	M03	Welcome / Jai Jinendra	2	Z03	Paradoxical Commands	1
G04	Six Observances	1	M04	Circular and Pamphlets		Z04	Politics - Democracy	1
			M05	Building Elevation / Model	1	Z05	Comparative Religion	1
			M06	Temple Information		Z06	Research / Rissios	1
G05	Samayika / Pratikraman	4						
G06	Swadhyaya / Vandana	2						
G07								

ART OF LIVING - A JAIN WAY OF LIFE



TEMPLE GABHARAS



Shri Mahavir Swami Temple 2<sup>nd</sup> Floor



Shri Adinathji Temple 3<sup>rd</sup> Floor

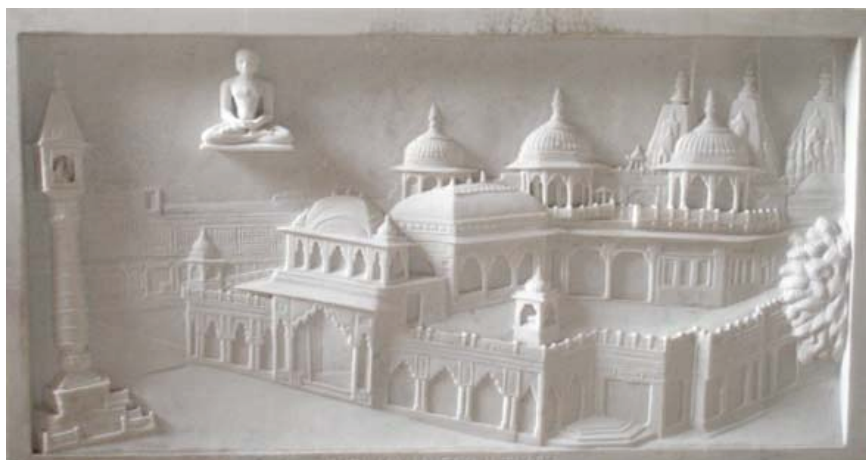
IDOLS AND PAT



Shri Choumukhji



Shri Dadawadi



Shri Mahavirji Tirth

ART IN MAKING OF A TEMPLE



### GOKHALAS IN THE TEMPLE



Dev - Devi on 2nd Floor



Jin Vani - Panch Meru on 3rd Floor

### NAVKAR MANTRA



Carved In Crystal & Gemstones

### ART ON TEMPLE WALLS